



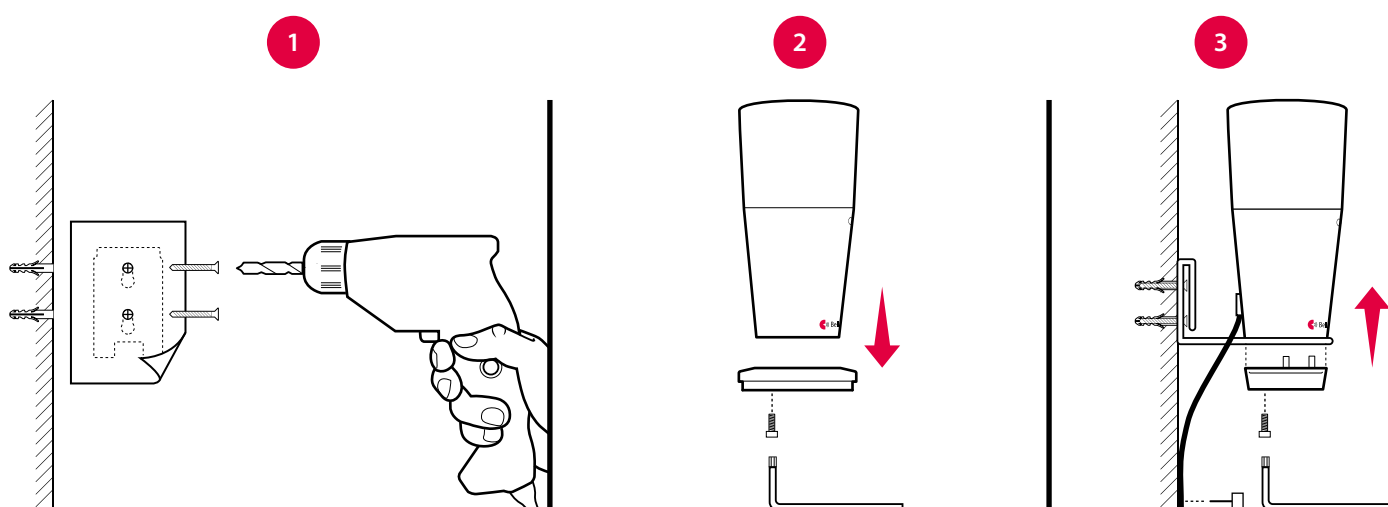
VISIT: 001ART011-EN

Flash receiver wall bracket

Using a flash receiver

BE1441

- 1 Use the drilling template to mark and drill holes for the screws and plugs.
- 2 Remove the flash receiver table stand using the Allen key.
- 3 Fit the wall bracket on the wall. Attach the bottom and mount the flash receiver on the wall bracket.



Using a flash receiver with battery backup

BE1442

- 1 Use the drilling template to mark and drill holes for the screws and plugs.
- 2 Remove the screw marked in red, located at the bottom of the flash receiver.
- 3 Fit the wall bracket on the wall. Re-attach the screw to mount the flash receiver on the wall bracket.

