





## Manufacturer

Bellman & Symfon Group AB  
Södra Långebergsgatan 30  
436 32 Askim Sweden  
Phone +46 31 68 28 20  
E-mail [info@bellman.com](mailto:info@bellman.com)  
**bellman.com**



Revision: BE1470\_034MAN012

Date of issue: 2020-10-30

TM and © 2020 Bellman & Symfon AB. All rights reserved.



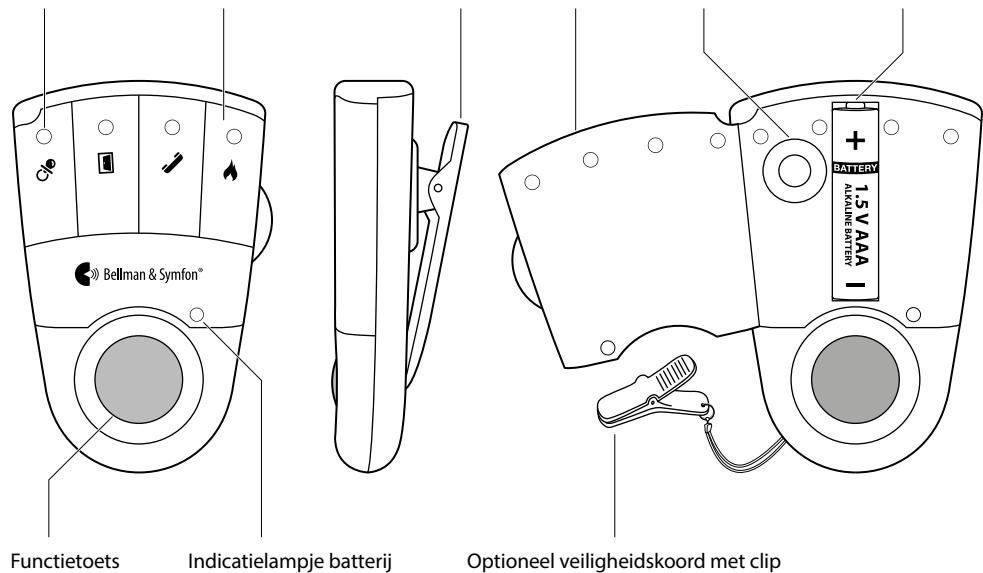
# Visit pager receiver

BE1470

Návod k použití	<b>CZ</b>
Benutzerhandbuch	<b>DE</b>
Brugervejledning	<b>DK</b>
User manual	<b>EN</b>
Manual del usuario	<b>ES</b>
Käyttöopas	<b>FI</b>
Mode d'emploi	<b>FR</b>
Εγχειρίδιο χρήσης	<b>GR</b>
Használati útasítás	<b>HU</b>
Manuale utente	<b>IT</b>
Gebruiksaanwijzing	<b>NL</b>
Brukerhåndbok	<b>NO</b>
Instrukcja obsługi	<b>PL</b>
Manual do utilizador	<b>PT</b>
Bruksanvisning	<b>SE</b>
Návod na použitie	<b>SK</b>
Installer's guide	<b>EN</b>

## Knoppen en bedieningselementen

Indicatielampjes Visit    Label voorzijde    Riemklem    Batterijdeksel    Batterij verwijderen    Batterijvakje



Functietoets

Indicatielampje batterij

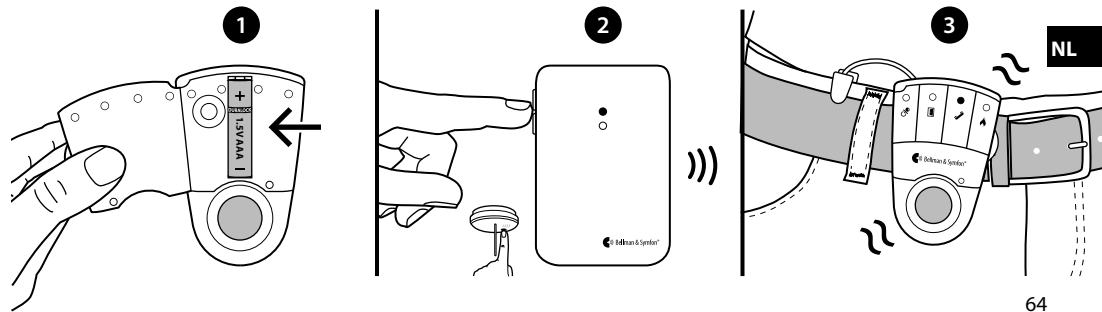
Optioneel veiligheidskoord met clip

## Inleiding

Deze pager maakt deel uit van het Visit 'smart home system' waarmee u uw huis in de gaten kunt houden. Het systeem waarschuwt met zachte trillingen als de deurbel of telefoon overgaat, wanneer uw baby u nodig heeft of bij brand. Lees de volledige gebruiksaanwijzing zorgvuldig door voordat u de pager gebruikt.

## Aan de slag

- 1 Open het batterijdeksel, plaats de batterij en sluit het deksel. Bevestig de pager aan uw riem met de riemklem. Gebruik voor extra veiligheid het meegeleverde veiligheidskoord.
- 2 U kunt de radioverbinding testen met een Visit-zender. Druk op de testtoets(en) op de zender.
- 3 De pager begint te trillen en er gaat een Visit-indicatielampje branden. Als er een trilschijf is aangesloten tijdens het opladen, trilt deze. Gebeurt er niets? Raadpleeg dan **Problemen oplossen**.



## Standaardpatroon van de signalen

Wanneer een zender wordt geactiveerd, laat de pager een Visit-indicatielampje branden en begint de pager aan een bepaald tempo te trillen. Dit noemen we een signaalpatroon. De zenders bepalen het signaalpatroon. Het standaardpatroon is als volgt:

Geactiveerde zender	Kleur van het indicatielampje	Trillingen, BE1470	Trillingen, BE1230
▪ Deurzender	Groen	Langzaam ■□□□	Langzaam ■□□□
▪ Druktoets zender	Groen	Langzaam ■□□□	Langzaam ■□□□
▪ Telefoonzender	Geel	Gemiddeld ■□■□	Langzaam ■□□□
▪ Babyfoon	Oranje	Snel ■■■■■■	Snel ■■■■■■
▪ Rookalarm	Rood	Lang ■■■■□	Lang ■■■■□

Het signaalpatroon kan alleen op de zenders worden gewijzigd (zie de aparte gebruiksaanwijzingen).

## De batterij vervangen

Wanneer het indicatielampje van de batterij geel knippert, is de batterij bijna leeg. Zo vervangt u de batterij:

- Open het batterijdeksel en druk op de verwijdertoets voor de batterij om de oude batterij te verwijderen. Plaats een nieuwe batterij, type 1,5 V AAA alkaline. Zie het batterijvakje voor de juiste plaatsing.

## Het label op de voorzijde vervangen

Als u de Visit voor andere doeleinden wilt gebruiken, kunt u het label op de voorzijde van de pager vervangen.

- Open het batterijdeksel, vervang het originele label door het aangepaste label en sluit het deksel.

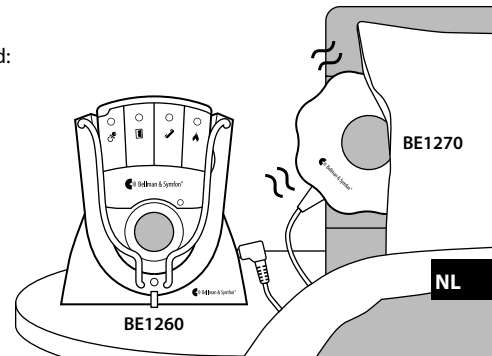
## De radiocode aanpassen

Als uw burens ook een Visit-systeem hebben, dan kunt u de radiocode aanpassen, zodat de systemen onderling geen storingen veroorzaken (zie **De radiocode wijzigen** in de installatiehandleiding).

## Accessoires

De pager kan met de volgende accessoires worden aangevuld:



- **BE1260 Oplader voor pager**  
Hiermee kunt u uw pager 's nachts opladen. Zet de lader op uw nachtkastje en sluit maximaal twee trilschijven aan. Let wel dat de pager niet trilt als hij wordt opgeladen, maar de Visit-indicatielampjes werken normaal.
- **BE1270 Trilschijf**  
Wekt u met trillingen als er iets gebeurt terwijl u slaapt. Sluit deze aan op de lader van de pager en schuif hem onder uw kussen of matras.



**Waarschuwing!** Wanneer u de oplader voor de pager gebruikt, **GEBRUIK DAN UITSLUITEND OPLAADBARE NiMH-BATTERIJEN** in de pager. Niet-oplaadbare batterijen gaan lekken als de pager in de oplader wordt geplaatst en door het zuur uit de batterij wordt de elektronica beschadigd. De schade die daardoor ontstaat, valt niet onder de garantie.

## Problemen oplossen

De meeste problemen met de pager kunnen met de onderstaande tips snel worden opgelost.

Als	Probeer dan
De pager lijkt uitgeschakeld	<ul style="list-style-type: none"><li>De batterij is leeg. Vervang de batterij door een nieuwe batterij, type 1,5 V AAA alkaline.</li></ul>  <b>Belangrijk!</b> Als u een oplader voor uw pager hebt, gebruik dan uitsluitend een oplaadbare batterij, type 1,2 V AAA NiMH, in de pager.
Het indicatielampje voor de batterij knippert geel	<ul style="list-style-type: none"><li>De batterij is bijna leeg. Vervang de batterij door een nieuwe batterij, type 1,5 V AAA alkaline.</li></ul>  <b>Belangrijk!</b> Als u een oplader voor uw pager hebt, gebruik dan uitsluitend een oplaadbare batterij, type 1,2 V AAA NiMH, in de pager.
De pager reageert niet wanneer er een zender wordt geactiveerd	<ul style="list-style-type: none"><li>Controleer de batterijen in de zenders.</li><li>Plaats de pager dicht bij de zender zodat u zeker weet dat deze binnen radiobereik is.</li><li>Controleer of de pager is ingesteld op dezelfde radiocode als de andere eenheden van het Visit-systeem (zie <b>De radiocode wijzigen</b> in de installatiehandleiding).</li></ul>
De pager wordt zonder reden geactiveerd	<ul style="list-style-type: none"><li>Er is waarschijnlijk een ander Visit-systeem in de buurt geïnstalleerd, waardoor uw systeem wordt geactiveerd. Verander de radiocode op alle eenheden (zie <b>De radiocode wijzigen</b> in de installatiehandleiding).</li></ul>

## Technische informatie

<b>Afmetingen</b>	H 86 mm x B 57 mm x D 29 mm
<b>Gewicht</b>	70 g incl. batterij
<b>Netvoeding</b>	7,5 V DC 1500 mA via de extra BE1260-oplader
<b>Batterijvoeding</b>	1 x 1,5 V AAA alkaline of 1 x 1,2 V AAA NiMH oplaadbare batterij
<b>Stroomverbruik</b>	Actief: ≤ 220 mA, in stand-by: ≤ 1 mA
<b>Gebruikstijd</b>	Met alkalinebatterij: 2 – 3 weken. Met NiMH-batterij: ~1 week, volledig opgeladen
<b>Activeren</b>	Via een Visit-zender
<b>Radiofrequentie</b>	314,91 MHz, 433,92 MHz en 868,30 MHz, afhankelijk van de regio
<b>Dekking</b>	50 – 250 m, afhankelijk van de radiofrequentie en kenmerken van het gebouw.
<b>In de verpakking</b>	BE1470 Pager Riemklem, veiligheidskoord en extra label voor de voorzijde
<b>Accessoires</b>	BE1260 Oplader voor pager, BE1270 Trilschijf
<b>Omgeving</b>	Alleen voor gebruik binnen.
<b>Voorschriften</b>	Voldoet aan de CE-, FCC- & IC-, RCM, 'Der Grüne Punkt'

## Aanvullende informatie

<b>Gebruik, transport en opslag</b>	Raadpleeg de <b>Installer's Guide</b> voor informatie.
<b>Onderhoud en reiniging</b>	Onderhoudsvrij. Reinigen met een droge doek. Niet geschikt voor hergebruik.
<b>Veiligheid en voorschriften</b>	Raadpleeg de <b>Installer's Guide</b> voor informatie.
<b>Service en ondersteuning</b>	Raadpleeg de <b>Installer's Guide</b> voor informatie.

## Installer's guide

Visit pager receiver in depth information



---

**101** Buttons and controls

---

**102** Getting started

---

**103** Using the pager and the accessories

---

**105** Changing the radio key

---

**106** Advanced programming

---

**107** Resetting the pager

---

**107** Testing the connection

---

**108** Troubleshooting

---

**109** Technical information

---

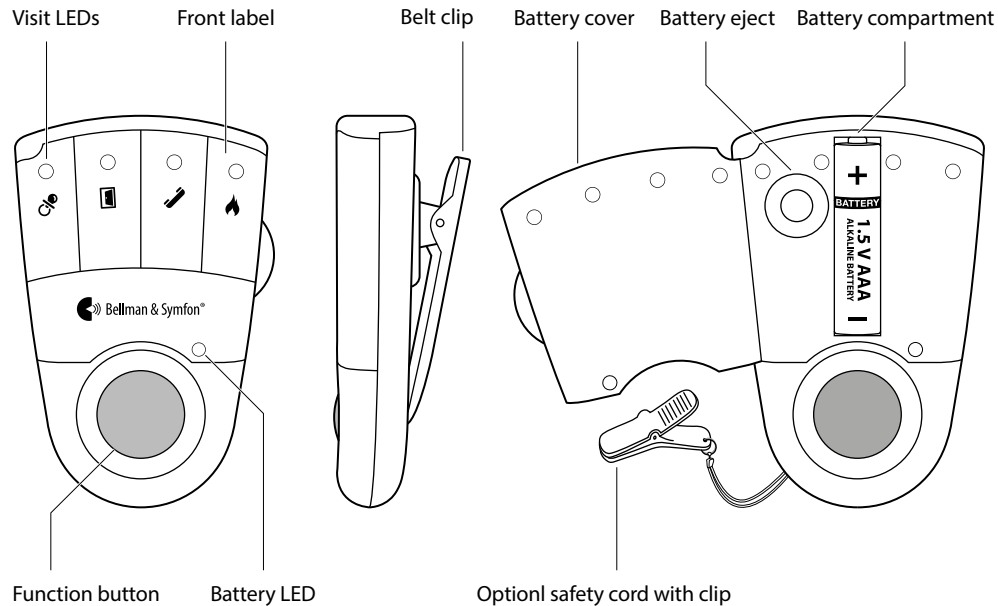
**110** Care and cleaning

---

**111** Important safety instructions

---

## Buttons and controls

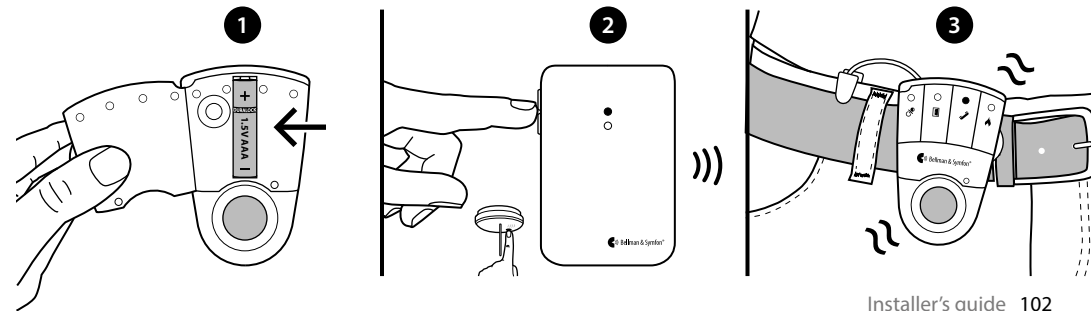


## Introduction

This pager receiver is part of the Visit smart home system that helps you to keep tabs on your home. It alerts you with gentle vibrations when the doorbell or telephone rings, when your baby needs you or if a fire should occur. Please read through the entire user manual before you start using the pager.

## Getting started

- 1 Open the battery cover, fit the battery and close the cover again. Attach the pager to your belt using the belt clip. For extra security, use the supplied safety cord.
- 2 To test the radio link you need a Visit transmitter. Press the test button/s on the transmitter.
- 3 The pager starts to vibrate and lights up a Visit LED. If a bed shaker is connected during charging, it will vibrate. If nothing happens, see **Troubleshooting**.





## Default signal pattern

When a transmitter is activated, the pager lights up a Visit LED and starts to vibrate with a certain pace. This is called signal pattern. The transmitters determine the signal pattern, and the default is as follows:

Activated transmitter	Pager LED colour	Vibration, BE1470	Vibration, BE1230
▪ Door transmitter	Green	Slow ■□□□	Slow ■□□□
▪ Push button transmitter	Green	Slow ■□□□	Slow ■□□□
▪ Telephone transmitter	Yellow	Medium ■□■□	Slow ■□□□
▪ Baby monitor	Orange	Fast ■■■■■■	Fast ■■■■■■
▪ Smoke alarm	Red	Long ■■■■□	Long ■■■■□

## Changing the signal pattern

The signal pattern can only be changed on the transmitters.

See the **Installer's guide** in the transmitter user manual.

## Replacing the battery

When the battery LED starts to blink in yellow, the battery is nearly depleted. Here is how you replace it:

- Open the battery cover and press the battery eject button to remove the old battery. Insert a new 1.5 V AAA type alkaline battery, see the battery compartment for correct positioning.

## Changing the front label

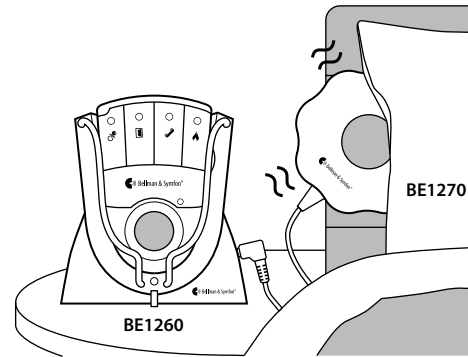
If you want to use Visit for other purposes, the pager front label can be replaced. Here is how it's done:

- Open the battery cover, replace the original label with the customized one and close the cover again.

## Accessories

The pager can be complemented with the following accessories:

- **BE1260 Pager charger**  
Charges your pager during the night. Place it on the bedside table and connect up to two bed shakers. Please note that the pager will not vibrate when it's charging, but the Visit LEDs will act as usual.
- **BE1270 Bed shaker**  
Wakes you with vibrations if anything happens while you are asleep. Connect it to the pager charger and slide it under your pillow or mattress.



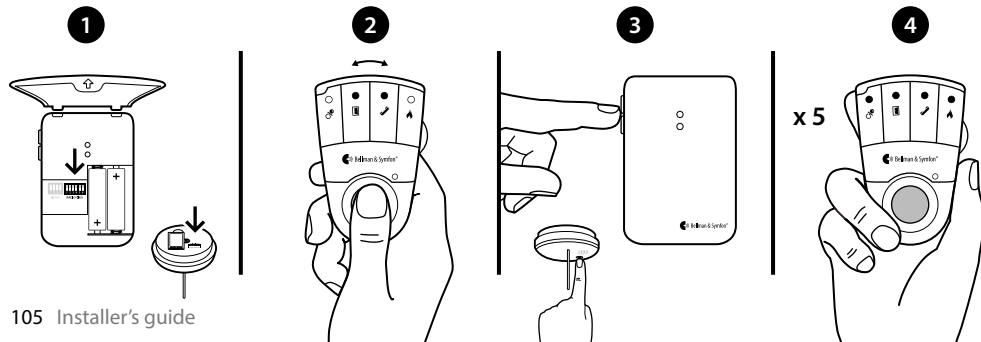
**Warning!** When using the pager charger **ONLY USE RECHARGEABLE NiMH BATTERIES** in the pager. Non-rechargeable batteries will start to leak if the pager is placed in the charger and the battery acid will damage the electronics. The resulting damage is not covered by warranty.

## Changing the radio key

If a neighbor also has a Visit system, you can change the radio key so that your systems don't interfere. The radio key is changed on the **transmitters** and must be set to the same position on all units in the system.

### Here is how you change the radio key

- 1 Open the transmitter cover and move any radio key switch/es to the up=on position to change the radio key. See the transmitter user manual for further information.
- 2 Press and hold the function button on the pager until the green and yellow LEDs blink alternately. Release the button.
- 3 Press the test button/s on the transmitter within 30 seconds to send the new radio key.
- 4 All Visit LEDs blink 5 times to show that the radio key has been changed. It then returns to normal mode.



## Advanced programming

By using advanced programming, you can customize the signal pattern from a specific transmitter and event, displaying the LED colour and vibration pattern of your choice. The advanced programming overrides the radio key and pairs the units via the serial number. Please note that smoke alarms cannot be programmed for safety reasons.

**Note:** The transmitter must be activated as it is intended to be used in the system to generate the right signal. This means that you can't always use the transmitter test button, see **Default signal pattern** for the relevant transmitter.

### Here is how you program the pager:

- 1 Press and hold the function button on the pager. The green and yellow Visit LEDs will start to blink alternately. While still holding down the button, activate the desired transmitter as intended. The yellow battery LED on the pager will light up to indicate that you are in advanced programming mode. Release the button.
- 2 Scroll through the different **Visit LED options** by pressing the function button on the pager. Select the desired Visit LED pattern by holding down the function button until the battery LED goes out and lights up again.
- 3 Scroll through the different **vibration options** by pressing the function button on the pager. Select the desired vibration pattern by holding down the function button until the battery LED goes out and lights up again.
- 4 The pager will now show the new Visit LED colour and vibration pattern. Press the function button briefly to end the demonstration. After a short while, the pager will return to normal mode.



## Deleting the advanced programming

Follow the procedure below to delete the advanced programming:

- 1 Hold down the function button on the pager until the green and yellow Visit LEDs blink alternately. Release the button.
- 2 Press the function button on the pager 3 times in quick succession.
- 3 All Visit LEDs will light up for ~2 seconds to show that it has been deleted.

## Troubleshooting

Most problems with the pager can be solved quickly by following the advice below.

If	Try this
The pager seems to be turned off	<ul style="list-style-type: none"><li>▪ The battery is depleted. Replace it with a 1.5V AAA alkaline battery.</li></ul>  <b>Important!</b> If you have a pager charger, only use a rechargeable 1.2 V AAA NiMh battery in the pager.
The battery LED blinks in yellow	<ul style="list-style-type: none"><li>▪ The battery level is low. Replace it with a 1.5V AAA alkaline battery.</li></ul>  <b>Important!</b> If you have a pager charger, only use a rechargeable 1.2 V AAA NiMh battery in the pager.
The pager does not respond when a transmitter is activated	<ul style="list-style-type: none"><li>▪ Check the batteries in the transmitters.</li><li>▪ Move the pager closer to the transmitter to make sure it's within radio range.</li><li>▪ Check that the pager is set to the same radio key as the other units in the Visit system, see <b>Changing the radio key</b>.</li></ul>
The pager is activated for no apparent reason	<ul style="list-style-type: none"><li>▪ There is probably another Visit system installed nearby that triggers your system. Change the radio key on all units, see <b>Changing the radio key</b>.</li></ul>

## Technical information

<b>Dimensions and weight</b>	H 86mm (3.4") x W 57mm (2.2") x D 29mm (1.1"). Weight: 70 g (2.5 oz.) incl. battery
<b>Power supply</b>	Mains power: 7.5 V DC 1500 mA via the BE1260 charger accessory Battery power: 1 x 1.5 V AAA alkaline or 1 x 1.2 V AAA NiMH rechargeable battery
<b>Power consumption</b>	Active: ≤ 220 mA, Idle position: ≤ 1 mA
<b>Operating time</b>	Alkaline battery ~ 2–3 weeks, NiMH battery ~ 1 week, fully charged
<b>Activation</b>	Via Visit transmitter
<b>Radio frequency</b>	314.91 MHz, 433.92 MHz or 868.3 MHz depending on region
<b>Coverage</b>	50 – 250m (55 – 273yd) depending on radio frequency. Coverage is reduced by walls, large objects and other radio transmitters.
<b>Accessories</b>	BE1260 Pager charger, BE1270 Bed shaker
<b>In the box</b>	BE1470 Pager, Belt clip, safety cord and an extra front label
<b>Environment</b>	For indoor use only.
<b>Regulatory</b>	Fulfil CE, FCC & IC, RCM, Der Grüne punkt

## Additional information

<b>Operating temperature</b>	0° – 35° C, 32° – 95° F
<b>Transport and storage temp.</b>	-10° – 50° C, 14° – 122° F
<b>Relative humidity</b>	15% – 90% (non condensing)
<b>Maintenance and cleaning</b>	Maintenance free. Clean with a dry cloth. Don't use household cleaners, aerosol sprays, solvents, alcohol, ammonia, or abrasives.
<b>Warranty and service</b>	If the product appears to be damaged or doesn't function properly, follow the advice in this booklet. If it still doesn't function properly, contact your retailer for info about obtaining warranty service.

## Care and cleaning



**Please note:** Failure to follow these care and cleaning instructions could result in damage to the pager and void the warranty.

### Using connectors and jacks

Never force a connector into a jack. Check for obstructions on the jack. If the connector and jack don't join with reasonable ease, they probably don't match. Make sure that the connector matches the jack and that you have positioned the connector correctly in relation to the jack.

### Using the pager

Operate the pager in a dry environment where the temperature is always between 0° and 35° C (32° and 95° F). If the pager gets wet, it should no longer be regarded as reliable and should therefore be replaced.

### Cleaning

To clean the pager, use a soft, lint-free cloth. Avoid getting moisture in openings. Don't use window or household cleaners, aerosol sprays, solvents, alcohol, ammonia, or abrasives.

### Service and warranty

If the pager appears to be damaged or doesn't function properly, follow the instructions in this user guide. If the pager still doesn't function as intended, contact your local dealer for information on service and warranty.

### Additional information

For information about the proper disposal of the pager, and for other important safety and regulatory compliance information, see the section **Important safety instructions** on the following page.

# Important safety instructions

This section contains important information about safety, handling, disposal, recycling and warranty.



**Please note:** Read all safety information and operating instructions below before using the pager.  
Keep the user manual for future use.

## Warning!

- Failure to follow these safety instructions could result in fire, electric shock, or other injury or damage to the product or other property.
- Do not use or store this pager near any heat sources such as naked flames, radiators, ovens or other devices that produce heat.
- Do not dismantle the pager; there is a risk of electric shock. Tampering with or dismantling the pager will void warranty.
- Be aware that alarms can be missed if the batteries run out.
- Only refer damaged or faulty pagers to qualified service personnel.
- The pager is intended to be used as part of a home alerting system but should not be used as the only security in life-threatening situations.
- The pager has no power switch. In order to disconnect the product, the battery must be removed.
- The pager is designed for indoor use only.
- Do not expose the pager to moisture.
- Protect the pager from shocks during storage and transport.

## Model, type and classification

The information is available inside the pager's front lid.

## Product disposal and recycling information



The symbol to the left means that according to local laws and regulations your product should be disposed of separately from household waste. When this product reaches its end of life, take it to a collection point designated by local authorities. The recycling of your product will help conserve natural resources and ensure that it is recycled in a manner that protects human health and the environment.

## Battery disposal information



This symbol indicates that the product contains batteries that according to local laws and regulations must be disposed of separately from household waste. Take used batteries to a collection point designated by local authorities.

## Support centers

If you have any questions, please contact the Bellman & Symfon support team.

## FCC compliance statement

This device complies with Part 15 of the FCC Rules. Operation is subject to the following two conditions: (1) this device may not cause harmful interference, and (2) this device must accept any interference received, including interference that may cause undesired operation.

**Warning:** Changes or modifications to this unit not expressly approved by the party responsible for compliance could void the user's authority to operate the equipment.

**Note:** This equipment has been tested and found to comply with the limits for a Class B digital device, pursuant to part 15 of the FCC Rules. These limits are designed to provide reasonable protection against harmful interference in a residential installation. This equipment generates uses and can radiate radio frequency energy and, if not installed and used in accordance with the instructions, may cause harmful interference to radio communications. However, there is no guarantee that interference will not occur in a particular installation. If this equipment does cause harmful interference to radio or television reception, which can be determined by turning the equipment off and on, the user is encouraged to try to correct the interference by one or more of the following measures:

- Reorient or relocate the receiving antenna.
- Increase the separation between the equipment and receiver.
- Connect the equipment into an outlet on a circuit different from that to which the receiver is connected.
- Consult the dealer or an experienced radio/TV technician for help.

## Industry Canada statement

This device contains licence-exempt transmitter(s)/ receiver(s) that comply with Innovation, Science and Economic Development Canada's licence-exempt RSS(s). Operation is subject to the following two conditions:

- (1) This device may not cause interference.
- (2) This device must accept any interference, including interference that may cause undesired operation of the device.

L'émetteur/récepteur exempt de licence contenu dans le présent appareil est conforme aux CNR d'Innovation, Sciences et Développement économique Canada applicables aux appareils radio exempts de licence. L'exploitation est autorisée aux deux conditions suivantes :

- (1) L'appareil ne doit pas produire de brouillage;
- (2) L'appareil doit accepter tout brouillage radioélectrique subi, même si le brouillage est susceptible d'en compromettre le fonctionnement.

This Class B digital apparatus complies with the Canadian ICES-003.

IC: 6693A-BERX