





Manufacturer

Bellman & Symfon Group AB
Södra Långebergsgatan 30
436 32 Askim Sweden
Phone +46 31 68 28 20
E-mail info@bellman.com
bellman.com



Revision: BE1470_034MAN012

Date of issue: 2020-10-30

TM and © 2020 Bellman & Symfon AB. All rights reserved.

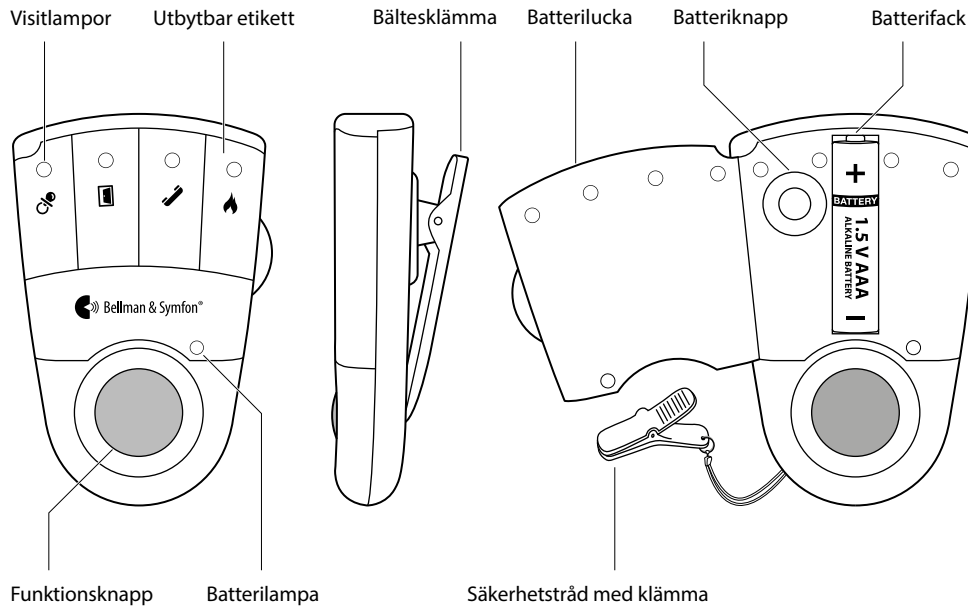


Visit pager receiver

BE1470

Návod k použití	CZ
Benutzerhandbuch	DE
Brugervejledning	DK
User manual	EN
Manual del usuario	ES
Käyttöopas	FI
Mode d'emploi	FR
Εγχειρίδιο χρήσης	GR
Használati útasítás	HU
Manuale utente	IT
Gebruiksaanwijzing	NL
Brukerhåndbok	NO
Instrukcja obsługi	PL
Manual do utilizador	PT
Bruksanvisning	SE
Návod na použitie	SK
Installer's guide	EN

Knappar och reglage

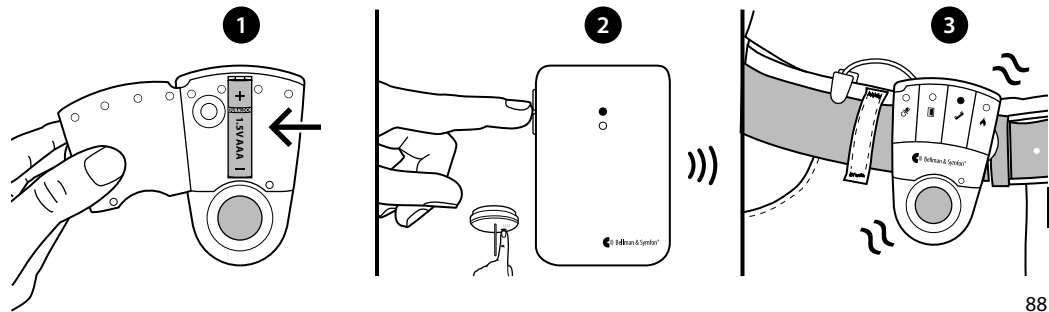


Inledning

Pagern från Bellman & Symfon är en del av Visits lösningar för smarta hem och hjälper dig hålla koll på signalerna hemma. Med diskreta vibrationer talar den om när dörren eller telefonen ringer, när din bebis behöver uppmärksamhet eller om en brand skulle inträffa. Läs igenom hela bruksanvisningen innan du börjar använda pagern.

Komma igång

- 1 Öppna batteriluckan, sätt i batteriet och stäng luckan igen. Sätt fast pagern på bältet med hjälp av bältesklämman. För extra säkerhet kan du fästa pagern med medföljande tråd och klämma.
- 2 För att testa radiolänken behöver du en Visitsändare. Tryck på sändarens testknapp.
- 3 En Visitslampa tänds på pagern och den börjar vibrera. Om en sängvibrator är ansluten medan pagern laddas, börjar den vibrera istället. Om pagern inte reagerar, se **Felsökning**.



Förinställt signalmönster

När en sändare aktiveras tänds en Visitlampa på pagern och den börjar vibrera med ett specifikt mönster. Det kallas signalmönster. Sändaren styr signalmönstret och förinställningen är:

Aktiverad sändare	Visitlampa, Pager	Vibration, BE1470	Vibration, BE1230
▪ Dörrsändare	Grön	Långsam ■□□□	Långsam ■□□□
▪ Tryckknappssändare	Grön	Långsam ■□□□	Långsam ■□□□
▪ Telefonsändare	Gul	Mellan ■□■□	Långsam ■□□□
▪ Babyvakt	Orange	Snabb ■■■■■■	Snabb ■■■■■■
▪ Brandvarnare	Röd	Lång ■■■□	Lång ■■■□

Signalmönstret kan endast bytas på sändarna, se bruksanvisningen för respektive sändare.

Byta batteri

När batterilampan börjar blinka gult är batteriet nästan slut. Så här byter du batteri:

- Öppna batteriluckan och tryck på batteriknappen för få ut batteriet. Sätt i ett 1,5 V AAA alkaliskt batteri, eller ett 1,2 V AAA NiMH uppladdningsbart batteri om du använder pagerladdaren (tillbehör).

Byta etikett

Om du vill använda Visit för ett annat syfte så kan du själv skriva på den bifogade extraetiketten. Så här byter du etikett:

- Öppna batteriluckan och ersätt originaletiketten med den bifogade extraetiketten. Stäng luckan igen.

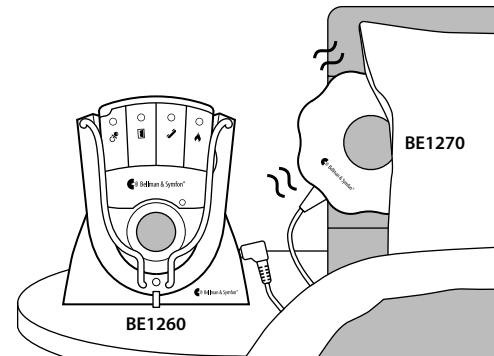
Byta radionyckel

Om ditt Visitsystem aktiveras utan anledning så finns det förmodligen ett närliggande system som stör. För att undvika radiostörningar bör du byta radionyckel på alla enheter. Se **Changing the radio key** i Installer's guide.

Tillbehör

Pagern kan kompletteras med följande tillbehör:



- **BE1260 Pagerladdare**
Laddar din pager under natten. Placera den på sängbordet och anslut upp till två sängvibratorer. Notera att pagern inte vibrerar när den laddas men Visitolamporna fungerar som vanligt.
- **BE1270 Sängvibrator**
Väcker dig med vibrationer om något skulle hända när du sover. Anslut den till laddaren och lägg den under kudden eller madrassen.



Varning! När pagerladdaren används skall **ENDAST UPPLADNINGSBARA NiMH BATTERIER** användas i pagern. Standardbatterier kan börja läcka om de placeras i laddaren och kommer då att förstöra elektroniken. Den typen av skada täcks inte av garantin.

Felsökning

De flesta problem med pagern kan enkelt lösas genom att följa råden nedan:

Om	Gör så här
Pagern verkar vara avstängd	<ul style="list-style-type: none">▪ Batteriet är slut. Ersätt det med ett 1,5 V AAA alkaliskt batteri.  Viktigt! Använd endast ett uppladdningsbart 1,2 V AAA NiMH batteri i pagern om du har en pagerladdare.
Batterilampan blinkar gult	<ul style="list-style-type: none">▪ Batterinivån är låg. Ersätt det med ett 1,5 V AAA alkaliskt batteri.  Viktig! Använd endast ett uppladdningsbart 1,2 V AAA NiMH batteri i pagern om du har en pagerladdare.
Pagern reagerar inte när en sändare aktiveras	<ul style="list-style-type: none">▪ Kontrollera sändarens batterier och anslutningar.▪ Flytta pagern närmare sändaren för att säkerställa att den är inom räckvidd.▪ Kontrollera att pagern har samma radionyckel som de andra enheterna i Visitsystemet, se Byta radionyckel.
Pagern aktiveras utan någon anledning	<ul style="list-style-type: none">▪ Det finns troligtvis ett annat Visitsystem i närheten som aktiverar din pager. Byt radionyckel på alla enheter, se Byta radionyckel.

Teknisk information

Mått	H 86 mm x B 57 mm x D 29 mm
Vikt	70 g inkl. batteri
Strömförsörjning	7.5 V DC 1500 mA via pagerladdaren (tillbehör)
Batterityp	1 x 1,5 V AAA alkaliskt eller 1 x 1,2 V AAA NiMH-batteri uppladdningsbart
Strömförbrukning	Aktiv: ≤ 220 mA, Viloläge: ≤ 1 mA
Batterilivslängd	Med alkaliskt batteri: 2 - 3 veckor. Med NiMH-batteri: ~1 vecka.
Aktivering	Via en Visitsändare
Radiofrekvens	314,91 MHz, 433,92 MHz og 868,30 MHz, beroende på region
Räckvidd	50 - 250 m beroende på byggnadens konstruktion och planlösning
I paketet	BE1470 pager, Bältesklämma, säkerhetstråd samt utbytbar etikett
Tillbehör	BE1260 pagerladdare, BE1270 sängvibrator
Omgivning	Endast för inomhusbruk.
Regulatoriska krav	Uppfyller CE, FCC & IC, RCM, Der Grüne punkt.

Övrig information

Användning, transport och lagring	Information om detta finns i Installer's Guide
Rengöring och underhåll	Underhållsfri. Rengör endast med mjuk duk. Använd inte rengöringsmedel, lösningsmedel, ammoniak eller alkohol. Ej återanvändbar.
Säkerhet	Information om bestämmelser och säkerhet finns i Installer's Guide .
Service och support	Information om garanti, service och support finns i Installer's Guide .

Installer's guide

Visit pager receiver in depth information



101 Buttons and controls

102 Getting started

103 Using the pager and the accessories

105 Changing the radio key

106 Advanced programming

107 Resetting the pager

107 Testing the connection

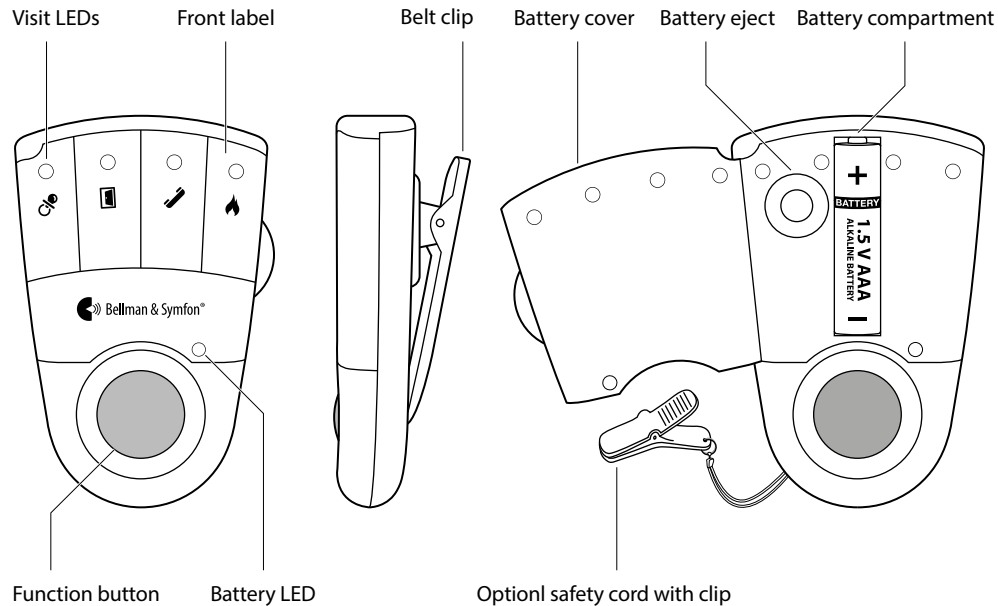
108 Troubleshooting

109 Technical information

110 Care and cleaning

111 Important safety instructions

Buttons and controls

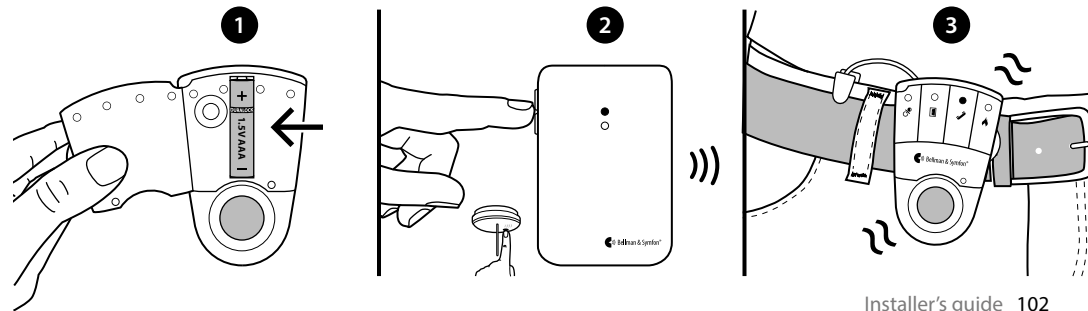


Introduction

This pager receiver is part of the Visit smart home system that helps you to keep tabs on your home. It alerts you with gentle vibrations when the doorbell or telephone rings, when your baby needs you or if a fire should occur. Please read through the entire user manual before you start using the pager.

Getting started

- 1 Open the battery cover, fit the battery and close the cover again. Attach the pager to your belt using the belt clip. For extra security, use the supplied safety cord.
- 2 To test the radio link you need a Visit transmitter. Press the test button/s on the transmitter.
- 3 The pager starts to vibrate and lights up a Visit LED. If a bed shaker is connected during charging, it will vibrate. If nothing happens, see **Troubleshooting**.



Default signal pattern

When a transmitter is activated, the pager lights up a Visit LED and starts to vibrate with a certain pace. This is called signal pattern. The transmitters determine the signal pattern, and the default is as follows:

Activated transmitter	Pager LED colour	Vibration, BE1470	Vibration, BE1230
▪ Door transmitter	Green	Slow ■□□□	Slow ■□□□
▪ Push button transmitter	Green	Slow ■□□□	Slow ■□□□
▪ Telephone transmitter	Yellow	Medium ■□■□	Slow ■□□□
▪ Baby monitor	Orange	Fast ■■■■■■	Fast ■■■■■■
▪ Smoke alarm	Red	Long ■■■■□	Long ■■■■□

Changing the signal pattern

The signal pattern can only be changed on the transmitters. See the **Installer's guide** in the transmitter user manual.

Replacing the battery

When the battery LED starts to blink in yellow, the battery is nearly depleted. Here is how you replace it:

- Open the battery cover and press the battery eject button to remove the old battery. Insert a new 1.5 V AAA type alkaline battery, see the battery compartment for correct positioning.

Changing the front label

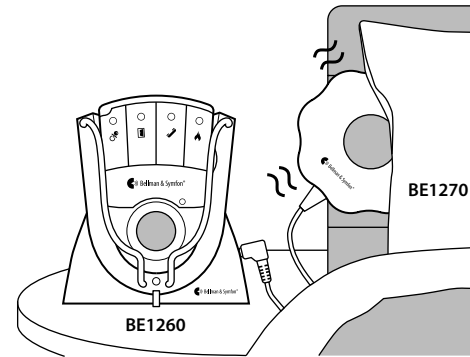
If you want to use Visit for other purposes, the pager front label can be replaced. Here is how it's done:

- Open the battery cover, replace the original label with the customized one and close the cover again.

Accessories

The pager can be complemented with the following accessories:

- **BE1260 Pager charger**
Charges your pager during the night. Place it on the bedside table and connect up to two bed shakers. Please note that the pager will not vibrate when it's charging, but the Visit LEDs will act as usual.
- **BE1270 Bed shaker**
Wakes you with vibrations if anything happens while you are asleep. Connect it to the pager charger and slide it under your pillow or mattress.



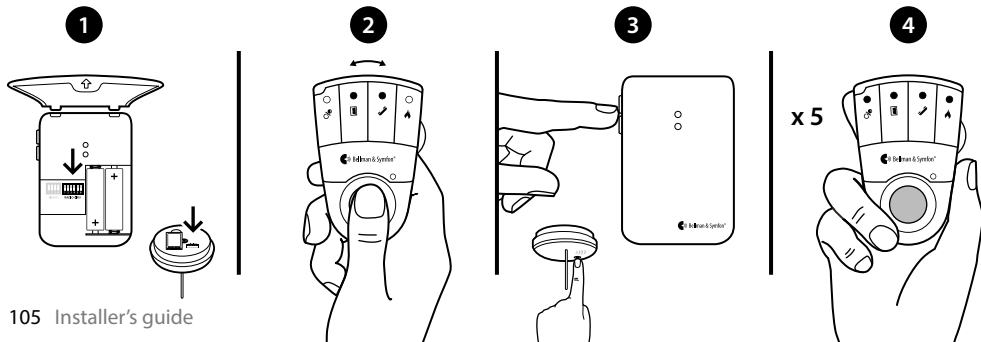
Warning! When using the pager charger **ONLY USE RECHARGEABLE NiMH BATTERIES** in the pager. Non-rechargeable batteries will start to leak if the pager is placed in the charger and the battery acid will damage the electronics. The resulting damage is not covered by warranty.

Changing the radio key

If a neighbor also has a Visit system, you can change the radio key so that your systems don't interfere. The radio key is changed on the **transmitters** and must be set to the same position on all units in the system.

Here is how you change the radio key

- 1 Open the transmitter cover and move any radio key switch/es to the up=on position to change the radio key. See the transmitter user manual for further information.
- 2 Press and hold the function button on the pager until the green and yellow LEDs blink alternately. Release the button.
- 3 Press the test button/s on the transmitter within 30 seconds to send the new radio key.
- 4 All Visit LEDs blink 5 times to show that the radio key has been changed. It then returns to normal mode.



Advanced programming

By using advanced programming, you can customize the signal pattern from a specific transmitter and event, displaying the LED colour and vibration pattern of your choice. The advanced programming overrides the radio key and pairs the units via the serial number. Please note that smoke alarms cannot be programmed for safety reasons.

Note: The transmitter must be activated as it is intended to be used in the system to generate the right signal. This means that you can't always use the transmitter test button, see **Default signal pattern** for the relevant transmitter.

Here is how you program the pager:

- 1 Press and hold the function button on the pager. The green and yellow Visit LEDs will start to blink alternately. While still holding down the button, activate the desired transmitter as intended. The yellow battery LED on the pager will light up to indicate that you are in advanced programming mode. Release the button.
- 2 Scroll through the different **Visit LED options** by pressing the function button on the pager. Select the desired Visit LED pattern by holding down the function button until the battery LED goes out and lights up again.
- 3 Scroll through the different **vibration options** by pressing the function button on the pager. Select the desired vibration pattern by holding down the function button until the battery LED goes out and lights up again.
- 4 The pager will now show the new Visit LED colour and vibration pattern. Press the function button briefly to end the demonstration. After a short while, the pager will return to normal mode.



Deleting the advanced programming

Follow the procedure below to delete the advanced programming:

- 1 Hold down the function button on the pager until the green and yellow Visit LEDs blink alternately. Release the button.
- 2 Press the function button on the pager 3 times in quick succession.
- 3 All Visit LEDs will light up for ~2 seconds to show that it has been deleted.

Troubleshooting

Most problems with the pager can be solved quickly by following the advice below.

If	Try this
The pager seems to be turned off	<ul style="list-style-type: none">▪ The battery is depleted. Replace it with a 1.5V AAA alkaline battery.  Important! If you have a pager charger, only use a rechargeable 1.2 V AAA NiMh battery in the pager.
The battery LED blinks in yellow	<ul style="list-style-type: none">▪ The battery level is low. Replace it with a 1.5V AAA alkaline battery.  Important! If you have a pager charger, only use a rechargeable 1.2 V AAA NiMh battery in the pager.
The pager does not respond when a transmitter is activated	<ul style="list-style-type: none">▪ Check the batteries in the transmitters.▪ Move the pager closer to the transmitter to make sure it's within radio range.▪ Check that the pager is set to the same radio key as the other units in the Visit system, see Changing the radio key.
The pager is activated for no apparent reason	<ul style="list-style-type: none">▪ There is probably another Visit system installed nearby that triggers your system. Change the radio key on all units, see Changing the radio key.

Technical information

Dimensions and weight	H 86mm (3.4") x W 57mm (2.2")x D 29mm (1.1"). Weight: 70 g (2.5 oz.) incl. battery
Power supply	Mains power: 7.5 V DC 1500 mA via the BE1260 charger accessory Battery power: 1 x 1.5 V AAA alkaline or 1 x 1.2 V AAA NiMH rechargeable battery
Power consumption	Active: ≤ 220 mA, Idle position: ≤ 1 mA
Operating time	Alkaline battery ~ 2–3 weeks, NiMH battery ~ 1week, fully charged
Activation	Via Visit transmitter
Radio frequency	314.91 MHz, 433.92 MHz or 868.3 MHz depending on region
Coverage	50 – 250m (55 – 273yd) depending on radio frequency. Coverage is reduced by walls, large objects and other radio transmitters.
Accessories	BE1260 Pager charger, BE1270 Bed shaker
In the box	BE1470 Pager, Belt clip, safety cord and an extra front label
Environment	For indoor use only.
Regulatory	Fulfil CE, FCC & IC, RCM, Der Grüne punkt

Additional information

Operating temperature	0° – 35° C, 32° – 95° F
Transport and storage temp.	-10° – 50° C, 14° – 122° F
Relative humidity	15% – 90% (non condensing)
Maintenance and cleaning	Maintenance free. Clean with a dry cloth. Don't use household cleaners, aerosol sprays, solvents, alcohol, ammonia, or abrasives.
Warranty and service	If the product appears to be damaged or doesn't function properly, follow the advice in this booklet. If it still doesn't function properly, contact your retailer for info about obtaining warranty service.

Care and cleaning



Please note: Failure to follow these care and cleaning instructions could result in damage to the pager and void the warranty.

Using connectors and jacks

Never force a connector into a jack. Check for obstructions on the jack. If the connector and jack don't join with reasonable ease, they probably don't match. Make sure that the connector matches the jack and that you have positioned the connector correctly in relation to the jack.

Using the pager

Operate the pager in a dry environment where the temperature is always between 0° and 35° C (32° and 95° F). If the pager gets wet, it should no longer be regarded as reliable and should therefore be replaced.

Cleaning

To clean the pager, use a soft, lint-free cloth. Avoid getting moisture in openings. Don't use window or household cleaners, aerosol sprays, solvents, alcohol, ammonia, or abrasives.

Service and warranty

If the pager appears to be damaged or doesn't function properly, follow the instructions in this user guide. If the pager still doesn't function as intended, contact your local dealer for information on service and warranty.

Additional information

For information about the proper disposal of the pager, and for other important safety and regulatory compliance information, see the section **Important safety instructions** on the following page.

Important safety instructions

This section contains important information about safety, handling, disposal, recycling and warranty.



Please note: Read all safety information and operating instructions below before using the pager. Keep the user manual for future use.

Warning!

- Failure to follow these safety instructions could result in fire, electric shock, or other injury or damage to the product or other property.
- Do not use or store this pager near any heat sources such as naked flames, radiators, ovens or other devices that produce heat.
- Do not dismantle the pager; there is a risk of electric shock. Tampering with or dismantling the pager will void warranty.
- Be aware that alarms can be missed if the batteries run out.
- Only refer damaged or faulty pagers to qualified service personnel.
- The pager is intended to be used as part of a home alerting system but should not be used as the only security in life-threatening situations.
- The pager has no power switch. In order to disconnect the product, the battery must be removed.
- The pager is designed for indoor use only.
- Do not expose the pager to moisture.
- Protect the pager from shocks during storage and transport.

Model, type and classification

The information is available inside the pager's front lid.

Product disposal and recycling information



The symbol to the left means that according to local laws and regulations your product should be disposed of separately from household waste. When this product reaches its end of life, take it to a collection point designated by local authorities. The recycling of your product will help conserve natural resources and ensure that it is recycled in a manner that protects human health and the environment.

Battery disposal information



This symbol indicates that the product contains batteries that according to local laws and regulations must be disposed of separately from household waste. Take used batteries to a collection point designated by local authorities.

Support centers

If you have any questions, please contact the Bellman & Symfon support team.

FCC compliance statement

This device complies with Part 15 of the FCC Rules. Operation is subject to the following two conditions: (1) this device may not cause harmful interference, and (2) this device must accept any interference received, including interference that may cause undesired operation.

Warning: Changes or modifications to this unit not expressly approved by the party responsible for compliance could void the user's authority to operate the equipment.

Note: This equipment has been tested and found to comply with the limits for a Class B digital device, pursuant to part 15 of the FCC Rules. These limits are designed to provide reasonable protection against harmful interference in a residential installation. This equipment generates uses and can radiate radio frequency energy and, if not installed and used in accordance with the instructions, may cause harmful interference to radio communications. However, there is no guarantee that interference will not occur in a particular installation. If this equipment does cause harmful interference to radio or television reception, which can be determined by turning the equipment off and on, the user is encouraged to try to correct the interference by one or more of the following measures:

- Reorient or relocate the receiving antenna.
- Increase the separation between the equipment and receiver.
- Connect the equipment into an outlet on a circuit different from that to which the receiver is connected.
- Consult the dealer or an experienced radio/TV technician for help.

Industry Canada statement

This device contains licence-exempt transmitter(s)/ receiver(s) that comply with Innovation, Science and Economic Development Canada's licence-exempt RSS(s). Operation is subject to the following two conditions:

- (1) This device may not cause interference.
- (2) This device must accept any interference, including interference that may cause undesired operation of the device.

L'émetteur/récepteur exempt de licence contenu dans le présent appareil est conforme aux CNR d'Innovation, Sciences et Développement économique Canada applicables aux appareils radio exempts de licence. L'exploitation est autorisée aux deux conditions suivantes :

- (1) L'appareil ne doit pas produire de brouillage;
- (2) L'appareil doit accepter tout brouillage radioélectrique subi, même si le brouillage est susceptible d'en compromettre le fonctionnement.

This Class B digital apparatus complies with the Canadian ICES-003.

IC: 6693A-BERX