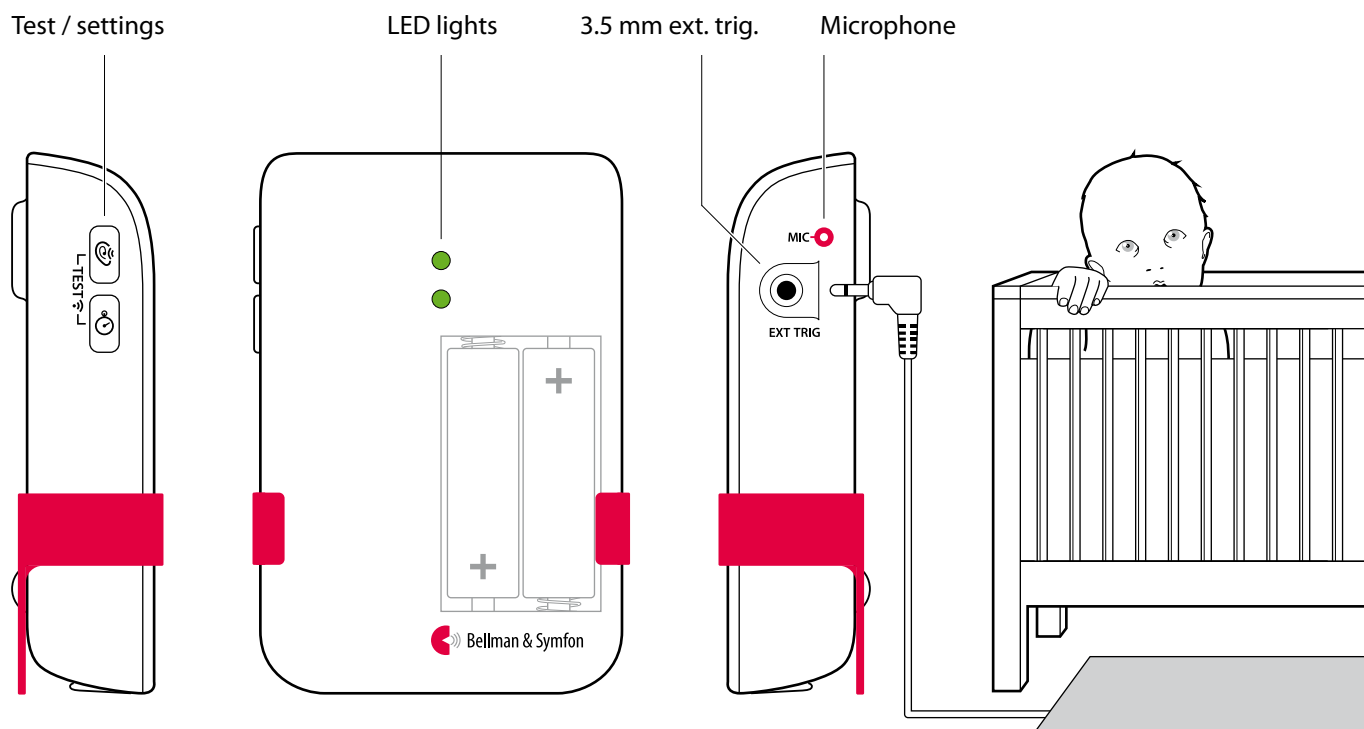





BE1491

Visit baby monitor

Buttons and connections



 Always make sure the baby monitor is out of the child's reach. Never place the baby monitor in the child's crib or playpen.

BE9026 contact mat

Technical specifications

In the box

- BE1491 Visit baby monitor
- 2 × 1.5 V AA alkaline batteries
- Pre-mounted table stand
- Screw and wall plug

Power and battery

- Battery power
2 × 1.5 V AA lithium or alkaline type batteries
- Power consumption
Active < 70 mA
Idle position < 400 µA
- Operation time
Alkaline batteries ~ 6 months
Lithium batteries ~ 1 year

Dimensions and weight

- Height: 100 mm, 4.0"
- Width: 65 mm, 2.6"
- Depth: 27 mm, 1.1"
- Weight: 120 g, 4.2 oz. incl. batteries

Activation

- The internal mic. and test buttons
- The contact mat accessory

Settings

- Sensitivity
65 dB, 75 dB, 85 dB
- Delay
30 sec, 10 sec, 1 sec

Environment

- For indoor use only
Operating temperature
15° to 35° C, 59° to 95° F
- Relative humidity
5% to 95%, non-condensing

Frequency and coverage

- Frequency: 314.91 MHz, 433.92 MHz or 868.30 MHz, depending on region
- Coverage: 50 - 250 m, 55 - 273 yd. depending on the radio frequency and the building's characteristics

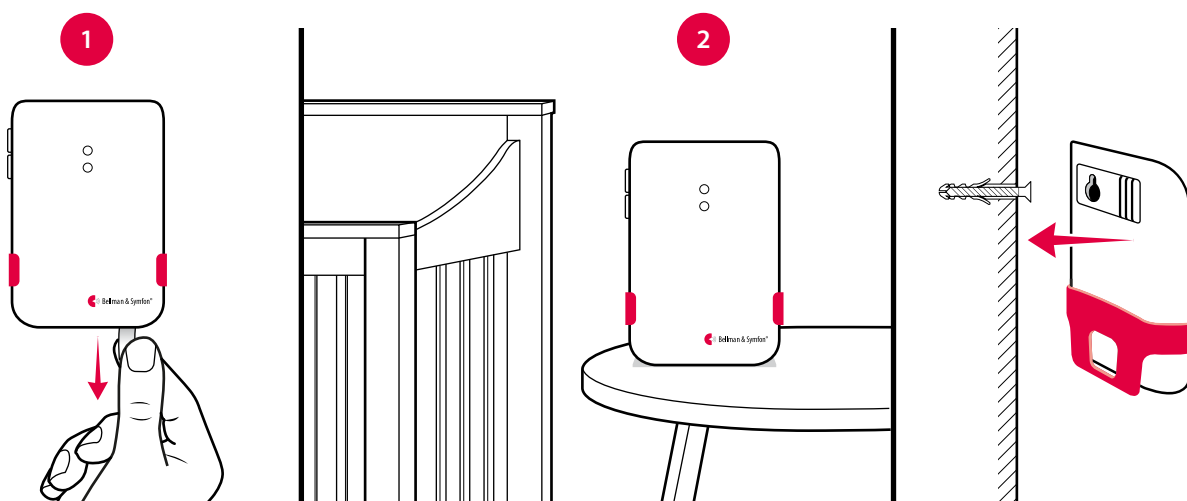
Accessories

- BE9026 Contact mat
Alerts you if your baby leaves the bed

Visit baby monitor

Setting up the baby monitor

- 1 Remove the battery pull tab to start the unit.
(You can press and hold both test buttons for 3 seconds to turn it on/off.)
- 2 Place the baby monitor on the bedside table or mount it on the wall using the supplied screw and plug.
The recommended distance is 0.5 – 2 m, always out of reach from the child.



Testing the connection

Using the test button

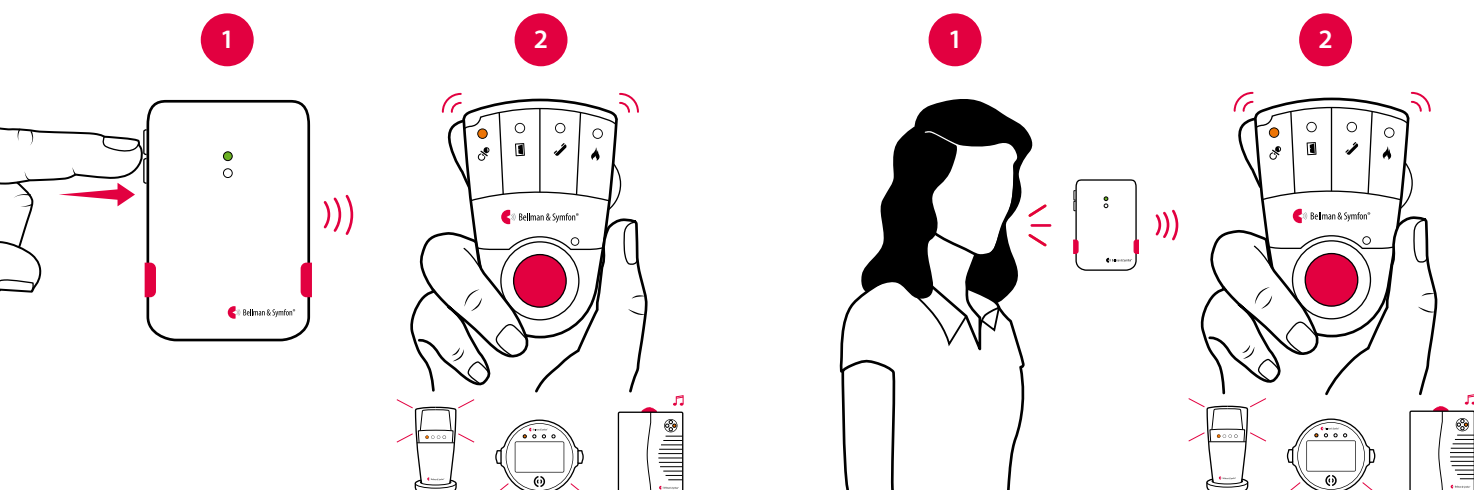
- 1 Press both test buttons simultaneously on the baby monitor. The top LED lights up in green to show that a radio signal is being transmitted.
- 2 The orange Visit LED on the receiver lights up to show that the signal was received. In addition, it starts to sound, flash or vibrate depending on the receiver.

Note: If you have changed the signal pattern, it will react in accordance with the table on the following spread.

Using your voice

- 1 Stand by the baby monitor and make some noise. The top LED lights up in green to show that the sound was detected.
- 2 The orange Visit LED on the receiver lights up to show that the radio signal was received. In addition, it starts to sound, flash or vibrate depending on the receiver.

Note: If you have changed the signal pattern, it will react in accordance with the table on the following spread.

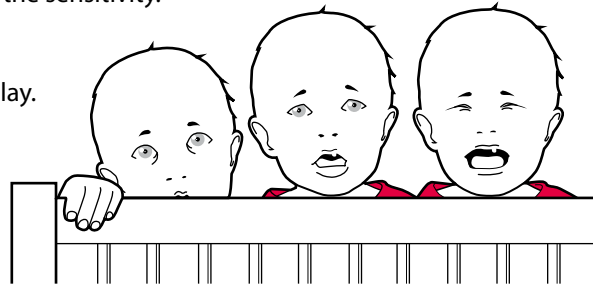


Visit baby monitor

Adjusting the settings

The buttons for sensitivity and delay are located on the left side of the baby monitor. When you press the button, the corresponding LED colour shows the current setting. Then press repeatedly to adjust the setting.

- If the baby monitor is not activated when the baby cries – increase the sensitivity.
- If the baby monitor is activated too easily – reduce the sensitivity.
- If the baby monitor is activated too early or too late – adjust the delay.



Sensitivity settings

	65 dB	Red
	75 dB	Orange
	85 dB	Green

Delay settings

	30 s	Red
	10 s	Orange
	1 s	Green

Default signal pattern

When the baby monitor is activated by the baby's voice or the contact mat, the following happens:

- 1 The LED on the baby monitor lights up in green to show that it is signalling the receiver.
- 2 The Visit LED on the receiver lights up in orange and it starts to sound, flash or vibrate with a certain pace, called signal pattern. The baby monitor and the contact mat accessory determine the signal pattern. The default is as follows:

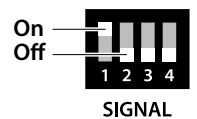
Baby monitor

Receiver signal pattern

Source	LED	LED	Sound	Vibration	Flash
▪ Baby voice	Green, top	Orange light	Baby melody	Fast	Yes
▪ Contact mat	Green, bottom	Green light	1 × door chime, low	Slow	Yes

Changing the signal pattern

If you have more than one child, you can set a unique Visit LED pattern for each baby monitor. Just open the front cover and move any signal switch to the up (on position) and make sure the other switches are down (off).



Baby monitor

Receiver signal pattern

Switch	Source	LED	Sound	Vibration	Flash
	Baby monitor 1	Orange light	Baby melody	Fast	Yes
	Contact mat 1	Green light	Baby melody	Fast	Yes
	Baby monitor 2	2 × orange blinks	Baby melody	Fast	Yes
	Contact mat 2	2 × green blinks	Baby melody	Fast	Yes
	Baby monitor 3	3 × orange blinks	Baby melody	Fast	Yes
	Contact mat 3	3 × orange blinks	Baby melody	Fast	Yes
	Baby monitor 4	Orange blinks	Baby melody	Fast	Yes
	Contact mat 4	Orange blinks	Baby melody	Fast	Yes

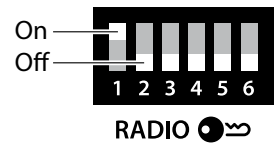
Visit baby monitor

Changing the radio key

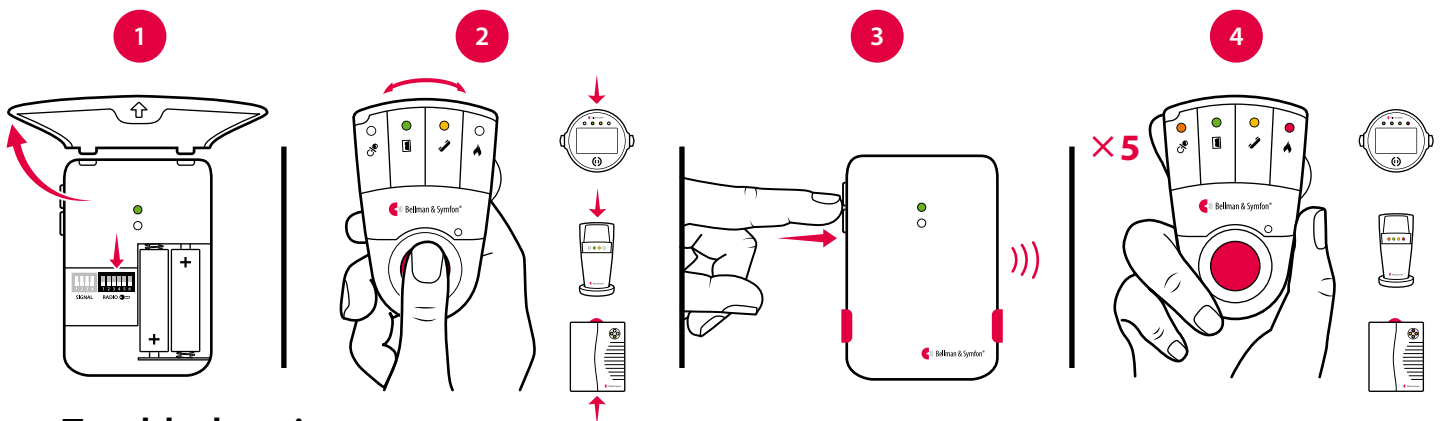
If your Visit system is activated for no reason, there is probably a nearby system that triggers yours. In order to avoid radio interference, you need to change the radio key on all units. The radio key switches are located under the monitor cover.

Here is how you change the radio key:


- 1 Carefully remove the table stand and open the front cover on the baby monitor. Move any radio key switch to the up (on position) to change the radio key.
- 2 Press and hold the test/function button on the receiver until the green and yellow Visit LEDs blink alternately. Release the button.
- 3 Press both test buttons simultaneously on the baby monitor within 30 s to send the new radio key.
- 4 All Visit LEDs on the receiver blink 5 times to show that the radio key has been changed. It then returns to normal mode.



Note: All Visit units must be set to the same radio key in order to operate as a group.



Troubleshooting

If	Try this
The LEDs blink in orange every minute	<ul style="list-style-type: none"> ▪ Replace the batteries. Only use 1.5 V AA (LR6) lithium or alkaline batteries.
The baby monitor LED lights up in green but the receiver is not activated	<ul style="list-style-type: none"> ▪ Check the baby monitor batteries and the receiver batteries and connections. ▪ Move the receiver closer to the baby monitor to make sure it's within range. ▪ Check that the units are set to the same radio key, see Changing the radio key.
The baby monitor LED doesn't light up even though the baby is crying	<ul style="list-style-type: none"> ▪ Move the baby monitor closer to the baby or increase the microphone sensitivity, see Adjusting the settings. ▪  Note: Always make sure the baby monitor is out of the child's reach. Never place the baby monitor in the child's crib or playpen.
The baby monitor is activated too easily	<ul style="list-style-type: none"> ▪ Reduce the sensitivity or move the baby monitor further away from the crib, see Adjusting the settings.
The baby monitor is activated too early	<ul style="list-style-type: none"> ▪ Increase the delay. For more information, see Adjusting the settings.
The baby monitor is activated too late	<ul style="list-style-type: none"> ▪ Reduce the delay, see Adjusting the settings.
The receiver is activated for no apparent reason	<ul style="list-style-type: none"> ▪ There is probably another Visit system installed nearby that triggers your system. Change the radio key on all units, see Changing the radio key.