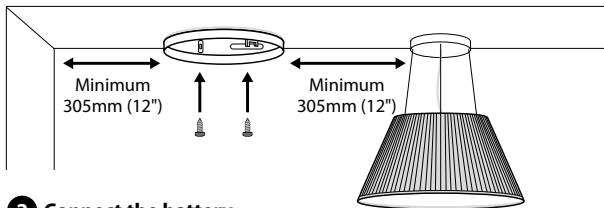


Quick start guide

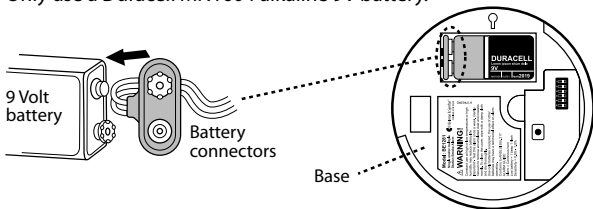
1 Mount the baseplate

Fix the baseplate to the ceiling using a screwdriver. The smoke alarm should be mounted at least 305 mm (12") from walls and obstructions, ideally centrally in the room/area.



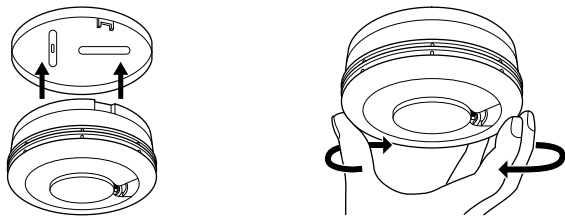
2 Connect the battery

Connect the battery to the battery snaps to power the smoke alarm unit. Only use a Duracell MN1604 alkaline 9V battery.



3 Attach the unit

Place the smoke alarm unit on top of the baseplate and twist it clockwise to attach it.



4 Test the alarm

A Press and hold the smoke alarm test button until the alarm sounds.

B The Visit receiver lights up a fire symbol in red and alerts with sound, flashes or vibrations (depending on the Visit receiver).

Please note: The smoke alarm will stop sounding shortly after the button is released and the Visit receiver will time out within ~40 s.

